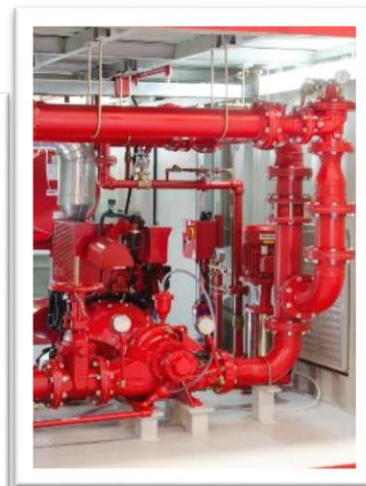


Armstrong Containerized Fire Solutions



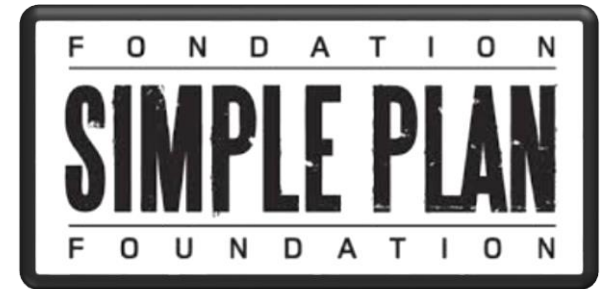
Leave your fire worries to us....

Plug & Play – Fire Protection Package in a Container



Features – Containerized Fire Packages

- Complete fire pump package in a standard shipping container
- Each Package customized to the specific site fire protection requirements
- Shipped as a single finished unit
- Ready for installation on simple foundation
- Compact Containerized design saves floor space



Features - Containerized Fire Packages

- Hassle free installation saving time & labour ***COSTS.***



- Simply connect the water and power supply , unit is ready for operation.



Features - Containerized Fire Packages

PEACE OF MIND



The total package is factory assembled

- Professionally designed by specialists using 3D modelling tools as per Fire and Electrical codes in each region



- Increases the Operational reliability

- Pre Commissioned

Features - Containerized Fire Packages

- Pumps Tested in advanced fully computerized testing facility that is certified to the global accreditations



- Packaged System -Reduced Procurement & lead time.

- Packaged System – Reduced on site shortages

- Packaged System –Reduced maintenance

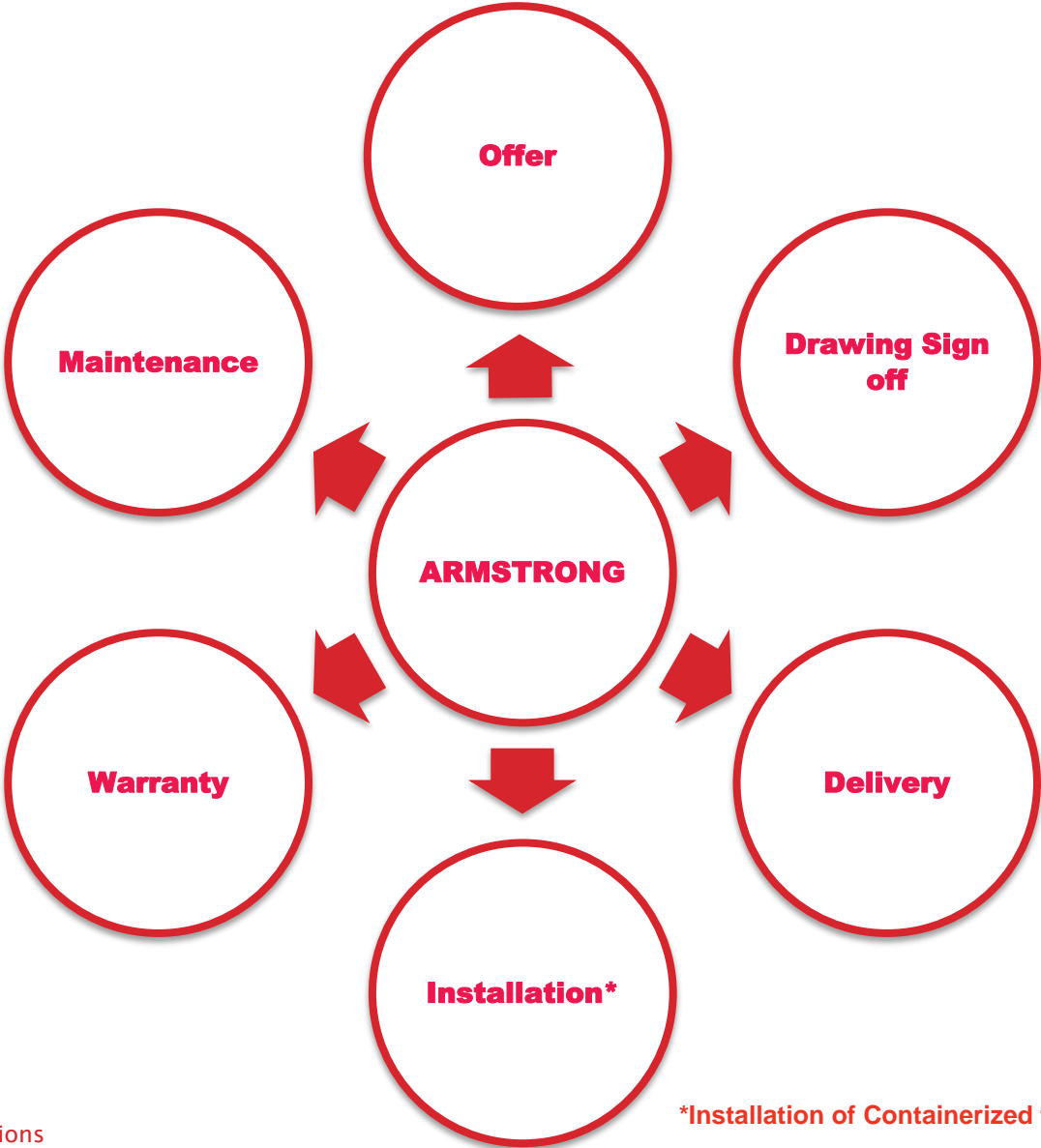
- Acoustically Attenuated**

reduce



** *Optional Feature*

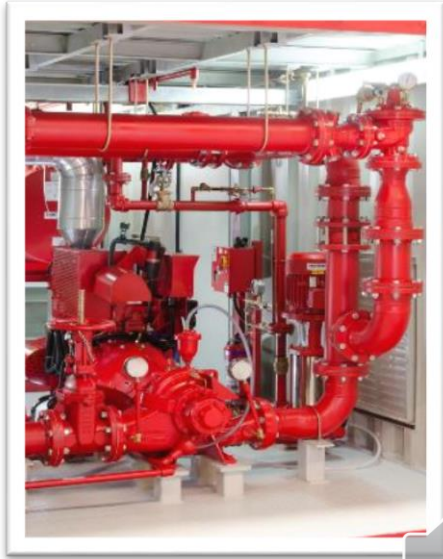
FeaturesSingle point of contact



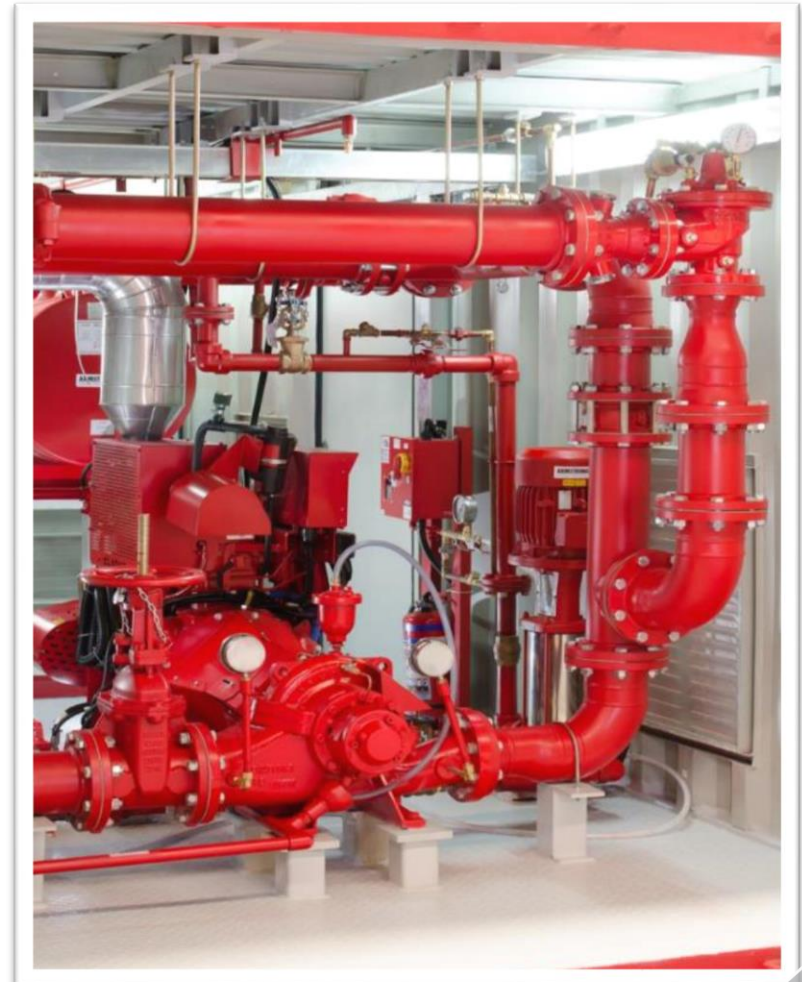
*Installation of Containerized fire package only



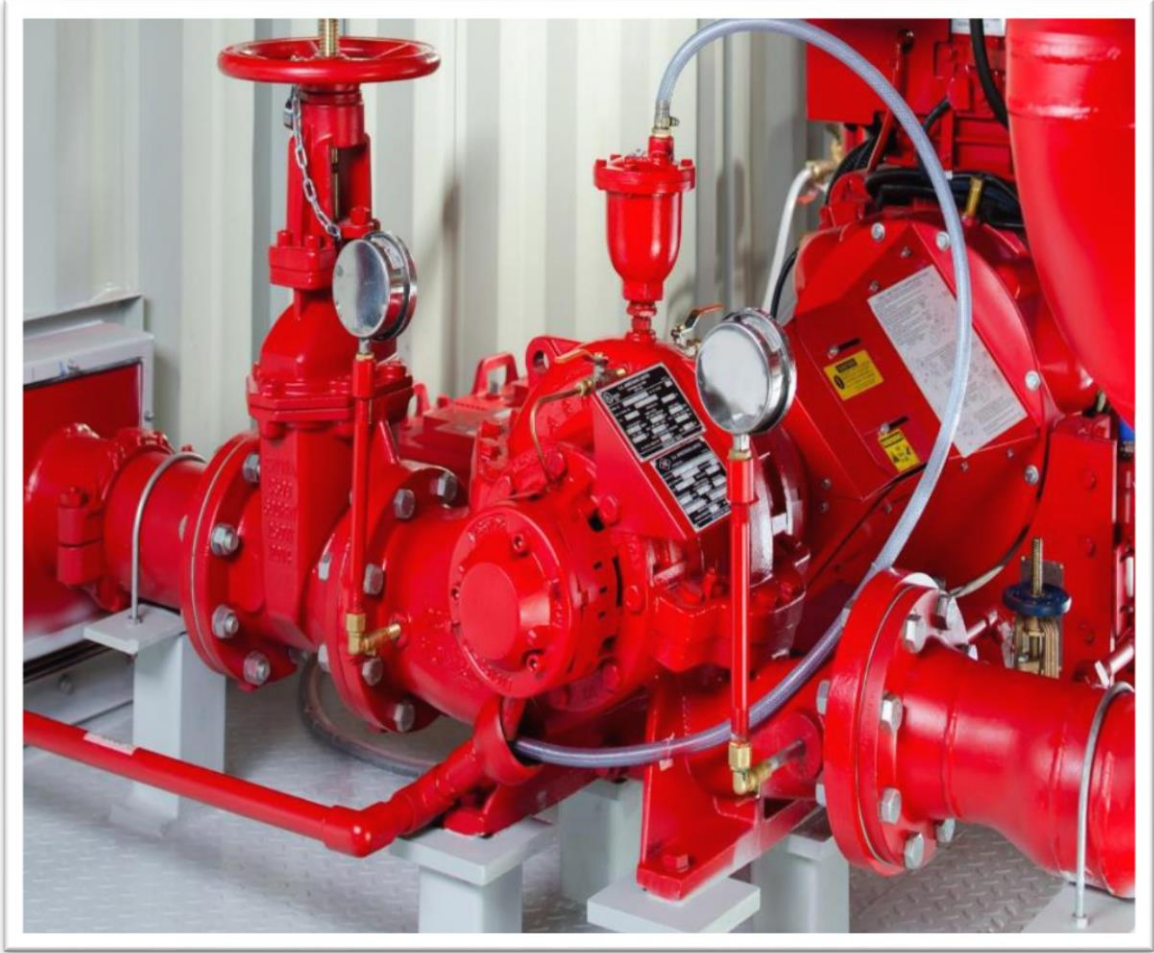
Containerized Fire Package



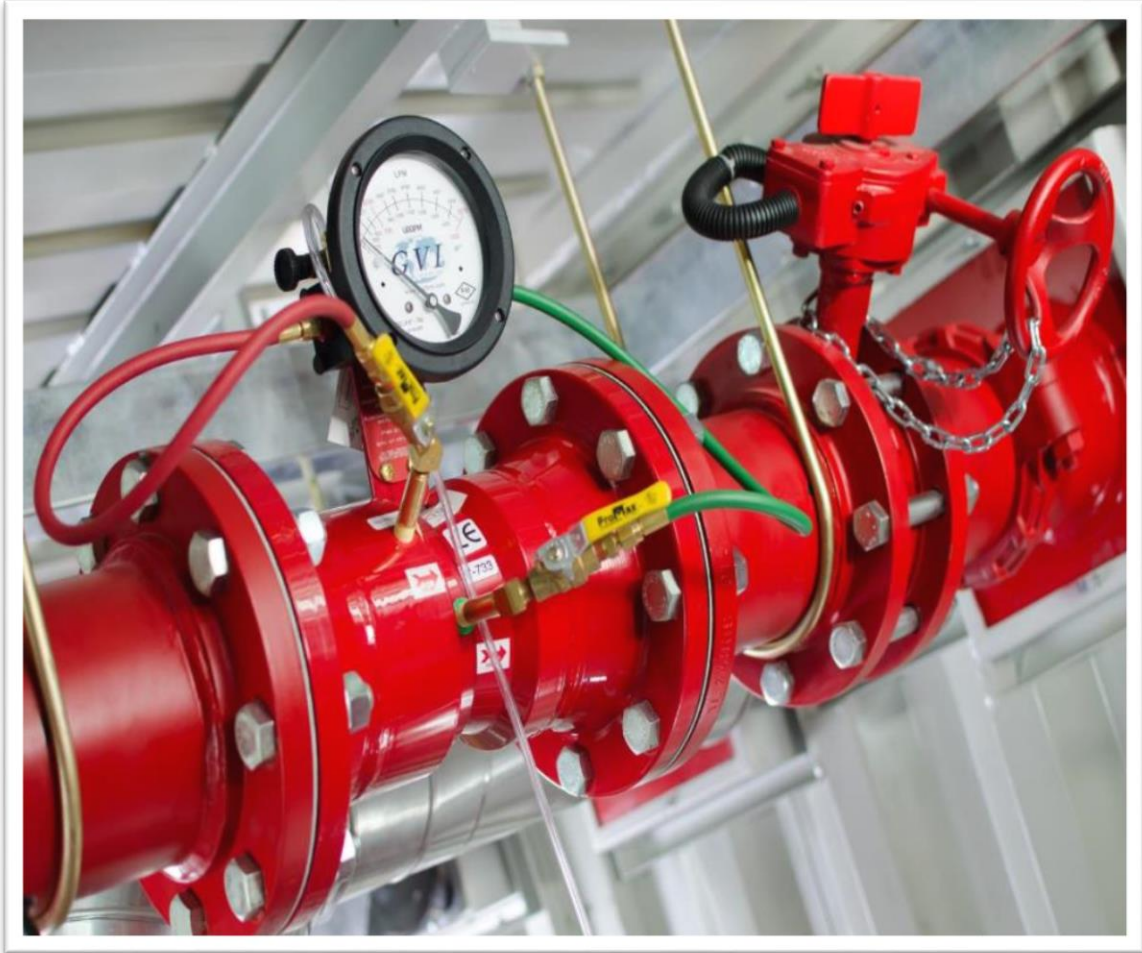
Inside View - Containerized Fire Package



Fire Pump



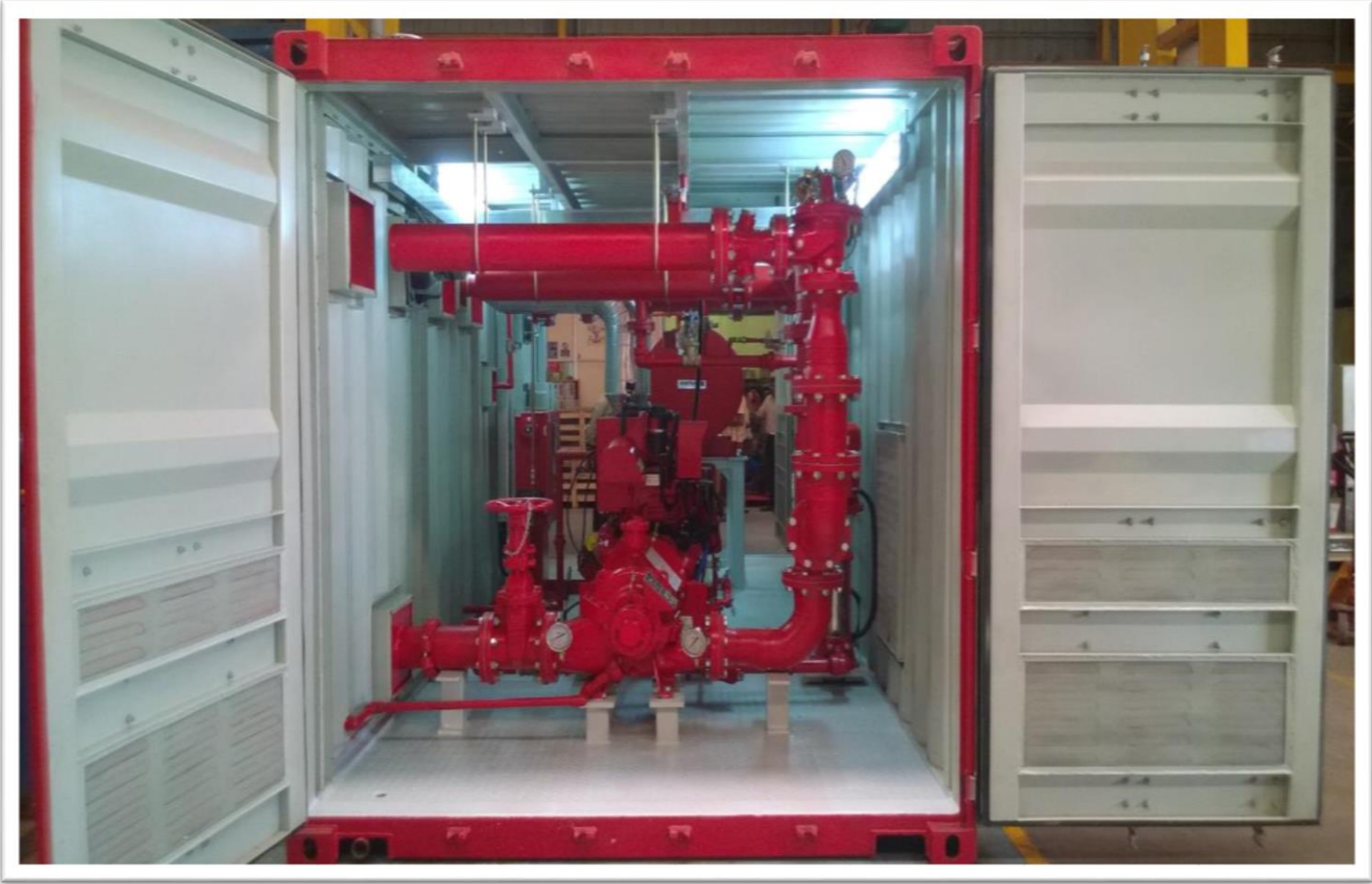
Flow meter



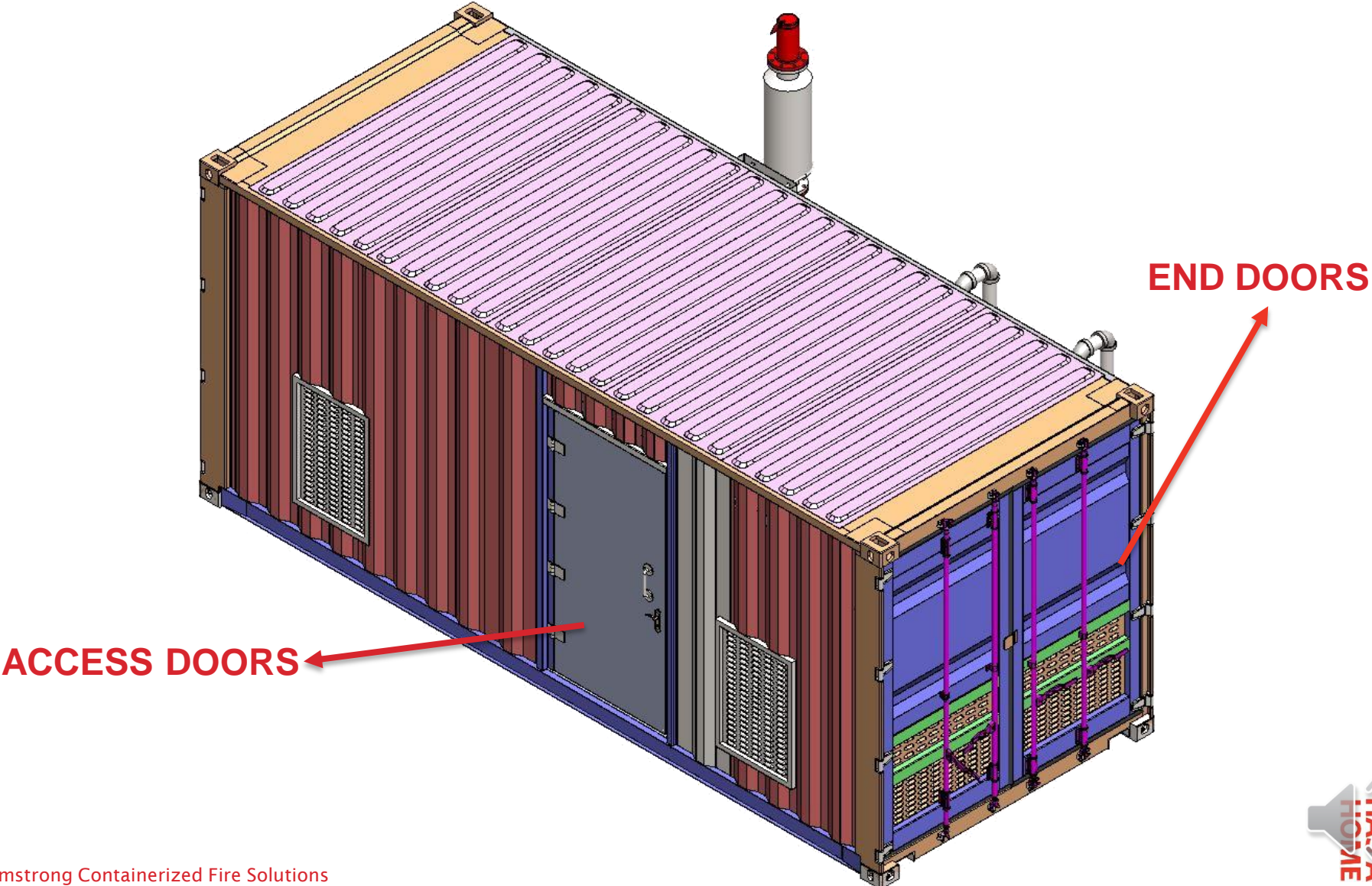
Pump Driver



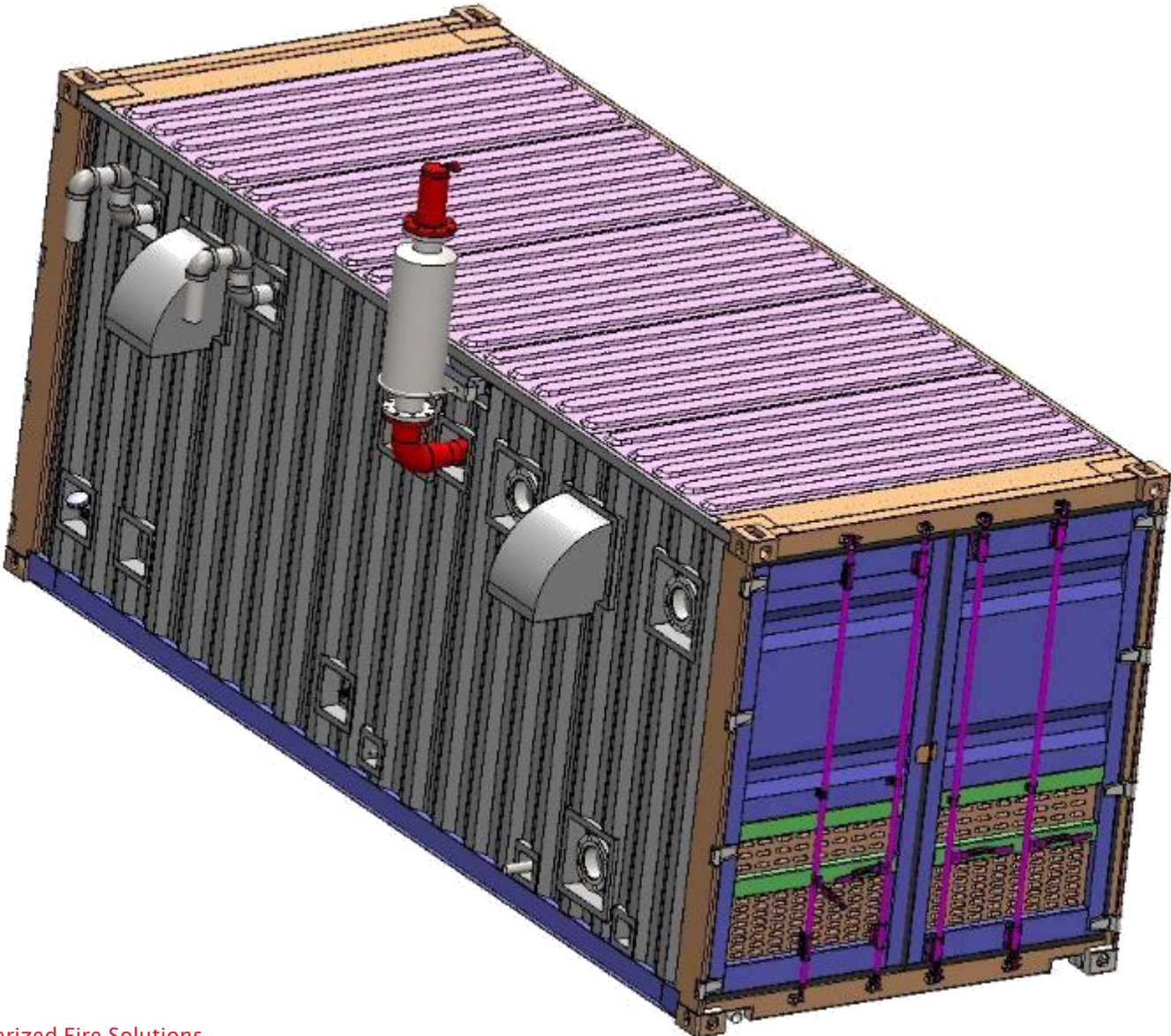
Front View



Design - View I



Design View II



The Custom made Fire Protection Pump Package Consists of :-

- End doors for access of heavy items for service/maintenance
- Small service door for regular operation.
- Pumps - Both Diesel & Electric driven Fire Pumps , Vertical Multi Stage.
- Controls – Diesel, Electric, Jockey, Field Terminal Block and power distribution
- All necessary piping – Suction, Discharge, Test and MRV line.
- All equipment's prewired and ready to use

The Custom made Fire Protection Pump Package Consists of :-

- Ventilation with exhaust fans :-
for keeping temperature under controls
provide sufficient air for Engine operation.
- All drain points taken out of container
- Common floor drain for cleaning purpose
- Non Slip chequered plates flooring
- Fire sprinkler as per NFPA 13 to safeguard the package

Thank You

